

MORE HARDWARE OPTIONS TO CHOOSE FROM

Capitalize on the Federal Energy Tax Credit with ComforTrack Plus' expanded hardware options!

ComforTrack Plus is certified for federal tax credits with the following fabric and hardware options: Symphony® Light Filtering and Blackout Fabrics with Standard Pull Cord, Top Down - Bottom Up, Cordless Ultra and Smoothy Continuous Cord Loop System.



CORDLESS ULTRA
This child-safety solution eliminates dangling pull cords and features hidden control system which allow shades to operate with a push and pull of the bottom rail.



TOP DOWN-BOTTOM UP
The easiest way to raise and lower shades. Simply push up or pull down on the moving rails, which will stay in place right where you put them.



SHALLOW MOUNT
Perfect for windows with limited mounting depth that need insulation! All you need is a 1/2-inch of depth to enjoy the energy efficient features of ComforTrack Plus.



EXPANDED COLOR SELECTION
Color coordinated endcaps are now available in all Universal Rail colors for use with Symphony, Symphony Blackout, Virtuoso and Virtuoso Blackout fabric collections.



2011 TAX CREDIT EXTENSION!

ComforTrack™ Plus Energy Saving Sidetrack Insulation System is Certified for Federal Tax Credit for Energy Efficiency.

Earn up to \$500* in Federal Tax Credits for Energy Efficiency in 2011!

Get on Track with ComforTrack Plus for Federal Tax Credits

ComforTrack Plus Energy Saving Sidetrack Insulation System is certified for the Federal Tax Credit on existing homes for Energy Efficiency. A tax credit allows you to deduct, dollar for dollar, from the taxes you owe. For more information, go to www.irs.gov or consult your tax advisor.

Insulate to save on your energy bills and taxes!

We all like getting money back at tax time. ComforTrack Plus Energy Saving Sidetrack Insulation System does just that! Get a tax credit of 10% of the purchase price up to a maximum of \$500* lifetime cap when you insulate your windows with ComforTrack Plus Energy Saving Sidetrack Insulation System. You'll cut your energy and tax bill all at the same time!

It's as easy as 1-2-3 to earn Federal Tax Credits for Energy Efficiency

- 1 Insulate your existing home's windows with Comfortex ComforTrack Plus Energy Saving Sidetrack Insulation System before December 31, 2011.
- 2 Save your receipts from your Comfortex dealer that reflect the itemized cost of Comfortex ComforTrack Plus Energy Saving Sidetrack Insulation System.
- 3 Download the Manufacturer's Certification Statement at <http://www.comfortex.com/taxcredit.html>. Print it out, and take it along with your itemized receipts to your tax professional to claim 10% of the cost of the Comfortex ComforTrack Plus Energy Saving Sidetrack Insulation System, up to \$500.00* on your taxes.

It's easy for the Comfortex Dealer, too!

- 1 Place into service the ComforTrack Plus Energy Saving Sidetrack Insulation System by December 31, 2011.
- 2 Provide your customer an itemized receipt showing cost of the ComforTrack Plus Energy Saving Sidetrack Insulation System.

* The tax credit for 2011 is subject to a lifetime limitation of \$500 and a reduction for the amount of Section 25C credits taken in prior years. It is recommended that you consult your tax advisor regarding your individual tax situation and your ability to claim this tax credit.

The ComforTrack Plus Energy Saving Sidetrack Insulation System is an Eligible Building Envelope Component and meets the requirements for the Non-business Energy Credit under Section 25C as amended by the Tax Relief, Unemployment Reinsurance Authorization and Jobs Creation Act of 2010 of the internal revenue code. The ComforTrack Plus Insulation System is specifically and primarily designed to reduce heat loss or gain in a house. Visit www.energystar.gov to learn more about eligible federal tax credits for existing homes. Homeowners should consult their tax advisor to determine whether they qualify for income tax credits.



"Close the Gap"

Cut your energy loss by two-thirds* and Earn Energy Tax Credits!

With the cost of heating your home rising, you need all the help you can get to keep the warm air in and the cool air out. Close the Gap! With the ComforTrack™ Plus Insulation System from Comfortex you can close the gap around your windows to stop the energy leaks that unnecessarily inflate your heating bills. And, thanks to the Internal Code Revenue Code 25C, save even more with Energy Tax Credits!



NO SHADE
Leaving windows uncovered in cold weather is like going outside without a jacket.



ADD A SYMPHONY CELLULAR SHADE
Adding an insulating cellular shade with standard hardware is like putting a jacket on your window. It makes you feel more comfortable. But, if it's not zipped, it's not enough.



ZIP IT UP WITH COMFORTRACK PLUS!
Use ComforTrack™ Plus Energy Saving Sidetrack Insulation System to close the gap. The ComforTrack Plus Insulation System locks out the cold and seals in the heat. For ultimate energy savings select Symphony® Blackout fabric as part of your ComforTrack Plus Insulating System for a two-thirds* reduction in energy loss.



Where Innovation is Always in Fashion™

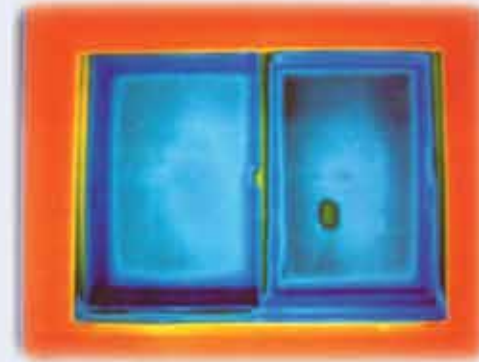
*Compared to an uncovered single pane window.

ComforTrack Plus

ENERGY SAVING SIDETRACK SYSTEM

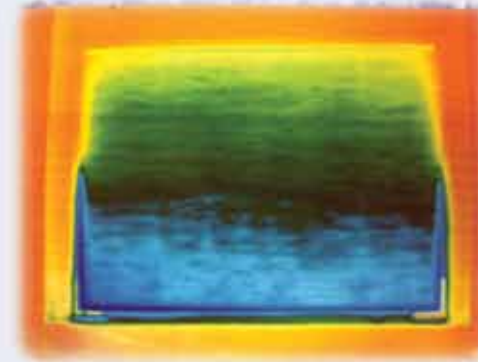
See the Difference

This window was photographed in a controlled laboratory setting using thermal photography, a process which distinguishes temperature zones as indicated by the color transitions. See the difference a Symphony Shade with ComforTrack Plus makes compared to an uncovered window.



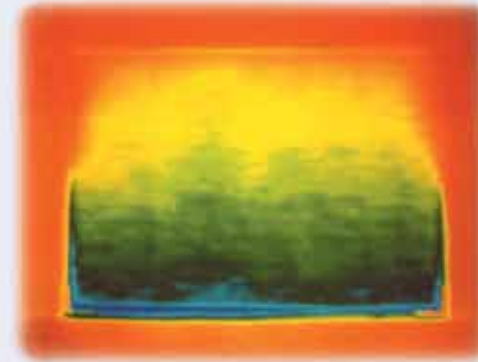
UNCOVERED WINDOW

The blue color in this photo indicates the temperature loss of an uncovered, single pane window.



WINDOW WITH SYMPHONY FABRIC

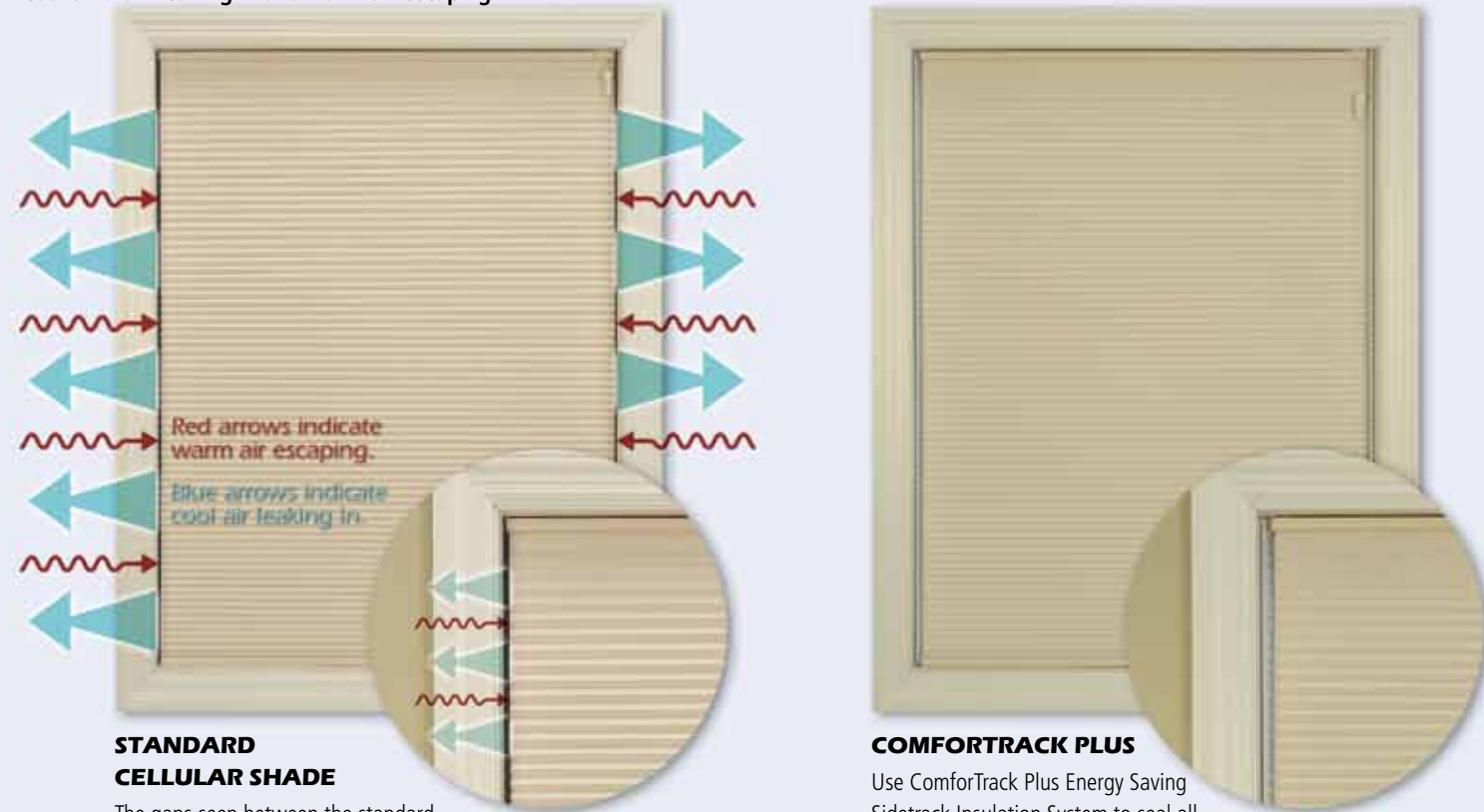
This photo shows the same window wearing a Symphony Cellular Shade with standard hardware. Note the color gradation from blue to green to yellow. The warmer colors indicate a temperature increase due to the inherent insulating effect of cellular fabric.



WINDOW WITH SYMPHONY FABRIC AND COMFORTRACK PLUS

Add the ComforTrack Plus Energy Saving Sidetrack Insulation System and the coldest blues fade away! Energy leaks are nearly eliminated since ComforTrack Plus seals the gap between the fabric edge and window frame.

Compare a standard cellular shade to the ComforTrack Plus Energy Saving Sidetrack Insulation System. Notice the large gaps between the edge of the standard shade and the window frame. The gaps allow cool air from the window surface to leak into your room while warm air is escaping. See the difference when you use the ComforTrack Plus Insulation System versus a cellular shade alone! ComforTrack Plus closes the gap, preventing cool air from leaking in and warm air escaping.



STANDARD CELLULAR SHADE

The gaps seen between the standard cellular shade and window frame are obvious. With gaps this significant, there is an energy loss where cool air leaks through and warm air escapes.

COMFORTRACK PLUS

Use ComforTrack Plus Energy Saving Sidetrack Insulation System to seal all the gaps between the fabric edge and window frame.

ComforTrack Plus

ENERGY SAVING SIDETRACK SYSTEM

How it Works

INNOVATIVE TECHNOLOGY



EASY TO INSTALL

The ComforTrack Plus Insulation System is easy to install, and features removable sidetracks that are attached to the window frame with magnets. The durable, UV stable sidetracks are available in white or brown to match your existing trim.



INNOVATIVE END CAPS

The specially designed bottom rail end caps fit over the sidetracks and allow for smooth movement when raising and lowering the shade.

CLOSING THE GAP: ENERGY GAP BARRIERS



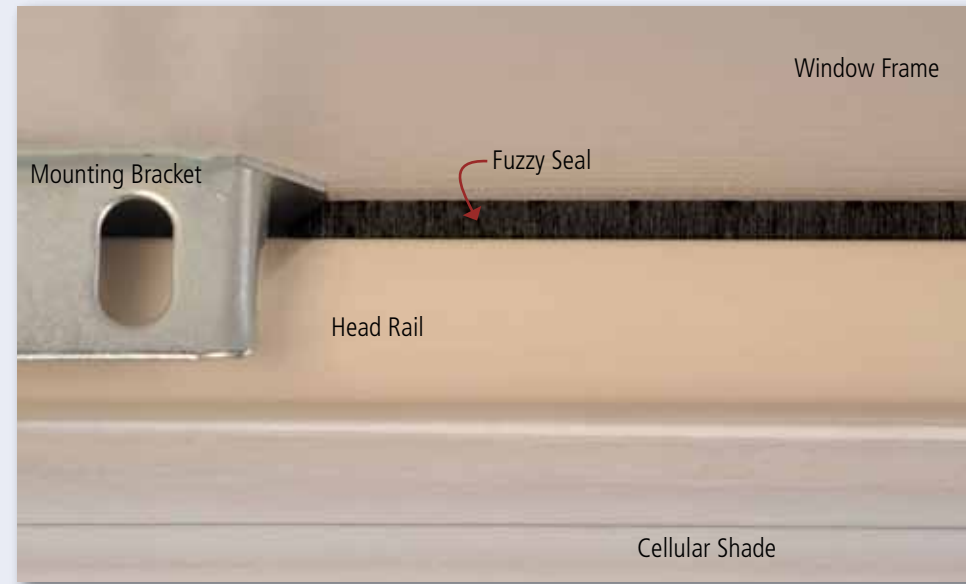
1ST ENERGY GAP BARRIER - SIDETRACKS

The sidetracks of ComforTrack Plus Energy Saving Sidetrack Insulation System are the first defense against your window's energy gap. The sidetracks seal off the gap between the shade and window to create a solid insulating barrier.



2ND ENERGY GAP BARRIER - FLEX SEAL

The ComforTrack Plus Flex Seal is a clear spring seal that is hidden between the cellular shade and the sidetracks. It flexes open and closed when the shade is raised and lowered to help create an energy tight seal.



3RD ENERGY GAP BARRIER - FUZZY SEAL

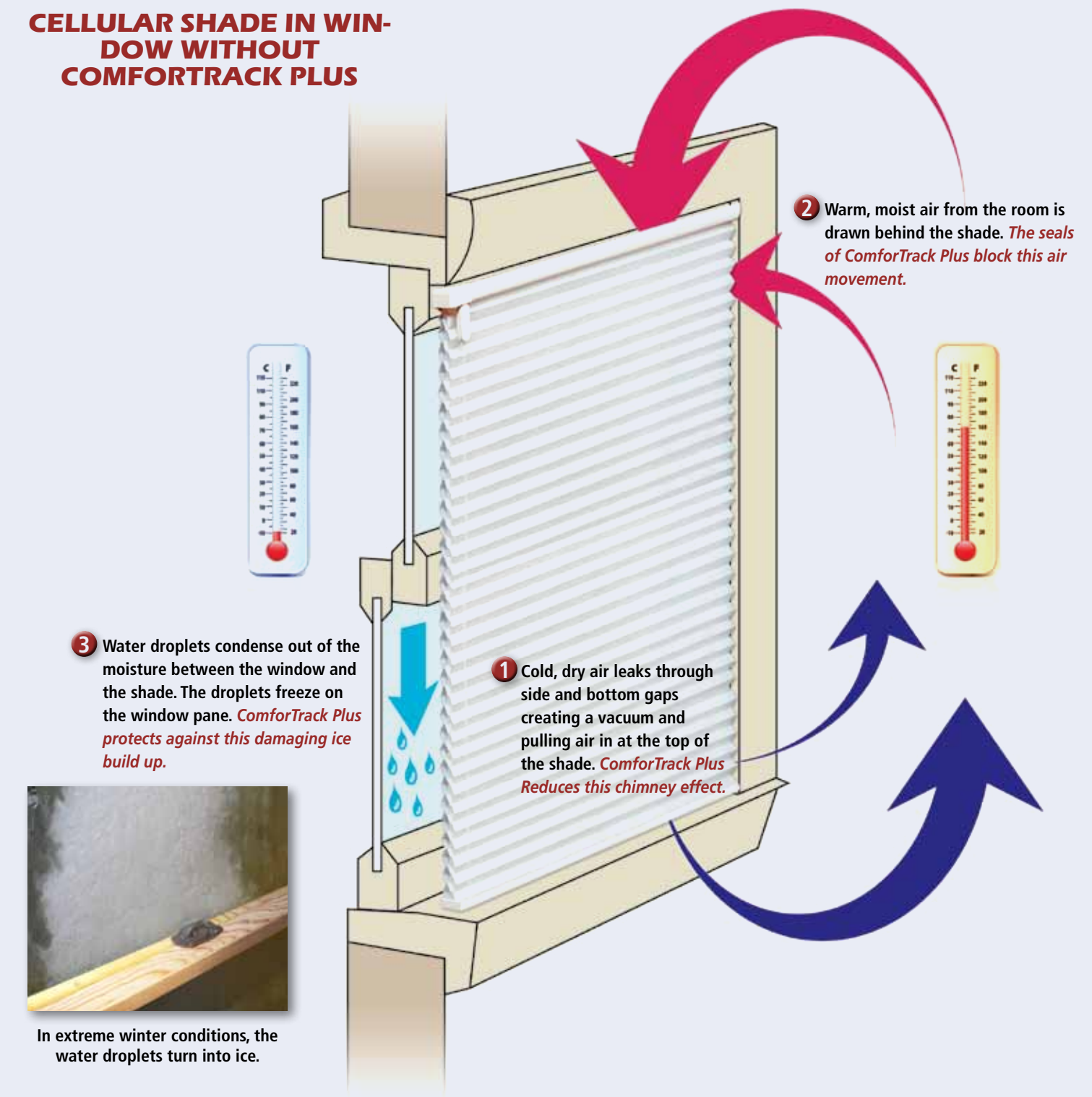
The final barrier is easy to miss, but makes a big impact in closing the energy gap. The small space between the head rail and the window frame is sealed off with the Fuzzy Seal which is discretely attached to the back of the head rail. The Fuzzy Seal traps air, but allows moisture to pass through.

ComforTrack Plus

ENERGY SAVING SIDETRACK SYSTEM

Prevents Ice Build Up

CELLULAR SHADE IN WINDOW WITHOUT COMFORTRACK PLUS



WINDOW WITH A CELLULAR SHADE ONLY

This illustration shows that a standard cellular shade without the ComforTrack Plus Sidetrack Insulation System has gaps between the edge of the shade and window frame where warm air from the room escapes and cold air from the outside leaks through. In this winter scenario, heat from the room is drawn to the cold area between the window and the shade. Continuous flow of warm air causes condensation as it cools leaving moisture on the inside of the window. This moisture causes water droplets, which can freeze in extreme cold temperatures creating potentially damaging frost or ice.

WINDOW WITH A COMFORTRACK PLUS ENERGY SAVING SIDETRACK INSULATION SYSTEM

Reduce the chimney effect... Reduce moisture... Reduce ice build up by installing the ComforTrack Plus Sidetrack System which seals all four sides of the window. The cold air stays between the window and shade, the warm air stays in the room.